



PRESS RELEASE

JK HOUSE

A SCULPTURAL, GEOMETRIC FAÇADE
MADE OF HI-MACS® FOR A BUILDING IN NEW DELHI

Photos: © Prashant Dubey, Nitish Goel

HI-MACS®
Natural Acrylic Stone™



Located in one of the highest-traffic parts of downtown New Delhi, India, is a monumental building whose façade, covered with Solid Surface HI-MACS®, stands out from the surrounding constructions. This institutional building meets the original objective of **Conarch Architects**, the firm tasked with its design. One of the key ideas behind it was functionality, as the entire indoor space was intended to house a combination of open-plan offices, individual offices, conference and meeting rooms - with parking spaces minimised, in view of the city's nascent public transport system. At the same time, the building's aesthetics are striking, thanks to a façade formed by an arrangement of geometric shapes that, despite their simplicity, create a highly expressive and sculptural look.

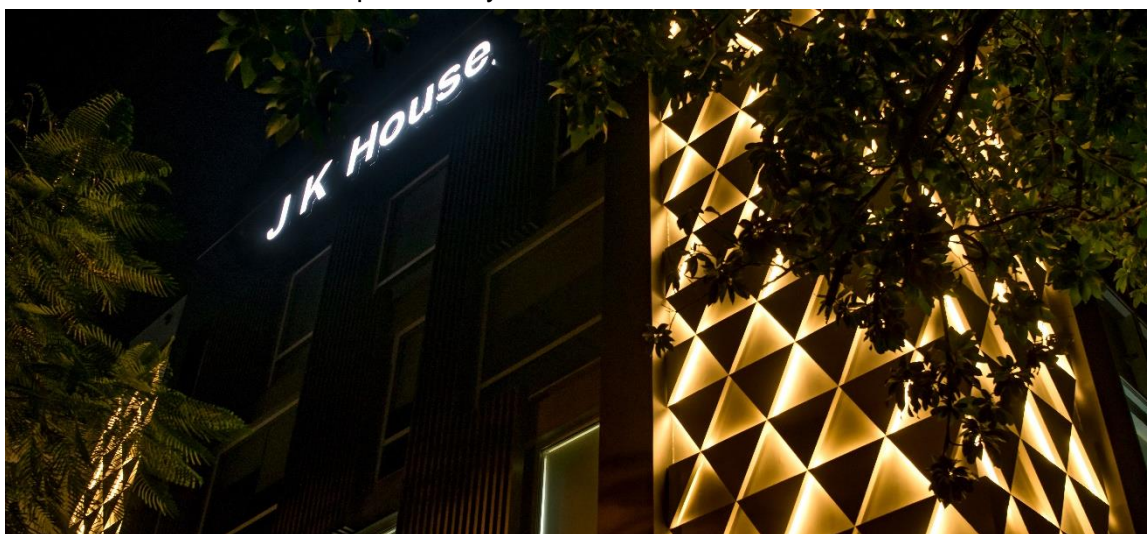
The structure of the building consists of six stories of open-plan workspaces, individual offices, conference rooms and meeting rooms. The bottom floors contain all kinds of break-out spaces, service areas and multipurpose halls, available to the 350 employees that the structure can accommodate. The top floors are earmarked for offices, meeting rooms, open workspaces and, last but not least, the roof-top terrace. In line with the functional design of the rest of the project, the roof was arranged to be a pleasant terrace, from which incredible panoramic views of New Delhi's urban area can be enjoyed.

The façade, made entirely in the pure, iconic hue of HI-MACS® Alpine White, is a striking three-dimensional vision, achieved through its arrangement of triangular shapes.



One important aspect for the façade's aesthetic appeal is that its location at the corner of the building only further enhances its shapes and its reliefs. What's more, the cladding not only adds a sculptural touch, but it also enriches and protects the whole building's structural facing.

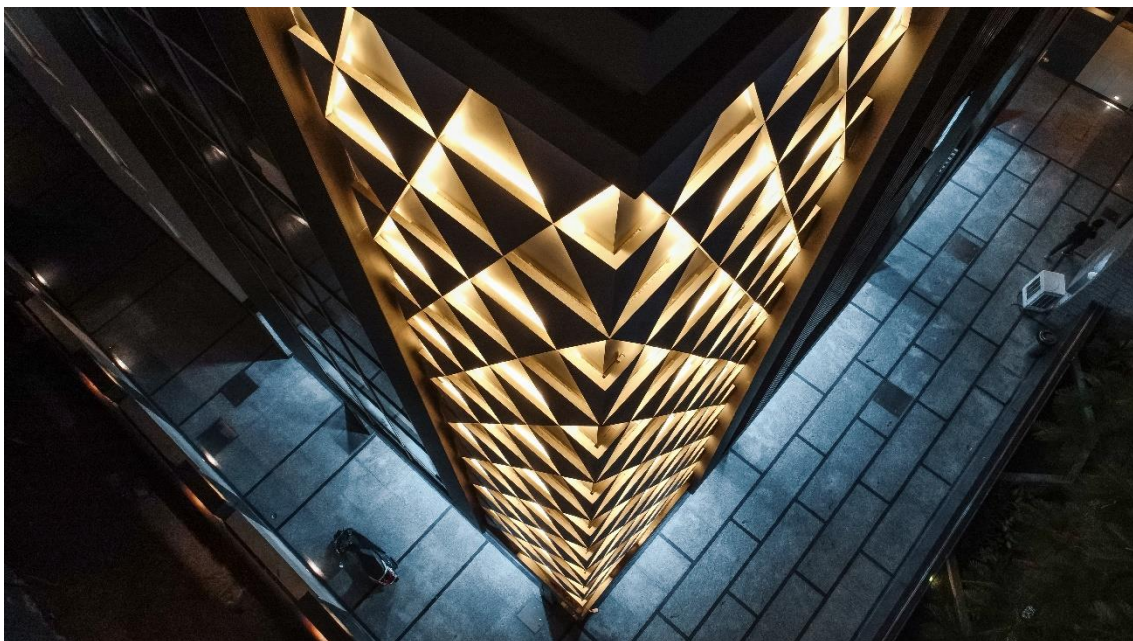
In the evening, when the construction's night-time lighting comes on, the façade's visual charm is accentuated by LED back-lighting installed behind the geometric shapes covering its entire surface. This interplay of lights and shapes transforms the whole corner of the building, separating it from its neighbours and arousing great interest and excitement in passers-by.



Thanks to its infinite design possibilities, HI-MACS® was the perfect choice for this kind of façade cladding. For projects with these types of characteristics, the material's thermoformable nature means it can be shaped into any organic and/or three-dimensional form, not to mention the spectacular lighting effects that can be achieved through milling and back-lighting, as well as the translucent properties made possible with HI-MACS®.

For exteriors, acrylic stone also offers excellent advantages, such as high resistance to humidity, ultraviolet rays and changes in temperature, conditions that are essential to this type of project. HI-MACS® Alpine White S728, which offers increased fire-resistance, is also the **first solid surface on the market to receive official European Technical Approval (ETA) for façade applications**. In addition, this material has earned France's QB and CSTB ATec (Technical Appraisal) certification for its original, advanced HI-MACS® UV+ S828 formula for façade applications.

Its certified resistance to weather and other external factors, plus its easy-to-clean uniform, non-porous surface, guarantee its constant aesthetic quality and high-level durability.



PROJECT INFORMATION

Project name: JK House

Client: J.C. Chaudhry

Location: New Delhi, India

Architects: Conarch Architects | <https://www.conarch.co> - **Principal Architect:** S.K. Goel

HI-MACS® supplier: Bansal Sales | <http://www.bansalsales.co.in>

Production: A.S. Interiors

Material: HI-MACS® Alpine White S028 | <http://www.himacs.eu>

Photo credits: © Prashant Dubey, Nitish Goel

HI-MACS® by LG Hausys

www.himacs.eu

HI-MACS® is a solid surface material that can be moulded into any shape. It is widely used for architectural and interior applications, such as sculptural and high performance wall-cladding or kitchen, bathroom and furniture surfaces, in commercial, residential and public space projects. It is composed of minerals, acrylic and natural pigments that come together to provide a smooth, non-porous and visually seamless surface which meets the highest standards for quality, aesthetics, fabrication, functionality and hygiene – offering manifold advantages over conventional materials.

HI-MACS® provides limitless possibilities for surfacing solutions and inspires creative minds from all over the world. **Zaha Hadid, Jean Nouvel, Rafael Moneo, Karim Rashid, Marcel Wanders** and **David Chipperfield**, among others, have completed fabulous projects using HI-MACS®.

At the forefront of innovation as always, LG Hausys recently introduced two new products. First **HI-MACS® Ultra-Thermoforming**, an innovative formula that pushes the boundaries of solid surface shaping to a whole new level, with 30% more thermoplastic capabilities - the biggest innovation for the Solid Surface history since its inception in 1967. Now, **HI-MACS® Intense Ultra**, combining the characteristics from two disparate worlds: **Intense Colour Technology** and **Ultra-Thermoforming**.

LG Hausys' HI-MACS® uses a simple heating process to give three-dimensional thermoplastic forming capabilities, allows visually seamless designs, offers a virtually limitless range of colours and – for some shades - exhibits a special translucency when exposed to light. Although HI-MACS® is almost as robust as stone, it can be worked in a similar way as wood: it can be sawn, routed, drilled or sanded.

HI-MACS® is manufactured using a new generation technology, the **thermal cure**. The temperature reached during the manufacturing process sets HI-MACS® apart from other solid surfaces and creates a denser, even more homogeneous, sturdy, durable surface – with a better resistance and superior thermoforming performance.

HI-MACS® does not absorb humidity, is highly resistant to stains, and is easy to clean, maintain and repair. Countless internationally recognized certificates attest to the quality of HI-MACS® in terms of ecological commitment, hygiene and fire resistance – being the first Solid Surface in the market to receive the official **European Technical Approval (ETA) for façades** – for Alpine White S728 colour. Furthermore, HI-MACS® has obtained the French **QB certification** and **CSTB ATec “Avis Technique”** for facade applications.

HI-MACS® offers a 15-year warranty for products fabricated by a Quality Club Member.



HI-MACS®. Because Quality Wins.

For more information and to stay connected, visit our [website](#) and our [newsroom](#).

Let's connect!



* **HI-MACS®** is designed and produced by **LG HAUSYS**, a world leader in the technology sector belonging to LG Group, and distributed by **LG HAUSYS EUROPE** based in Frankfurt (Germany).

HI-MACS® Media contact for Europe:

Mariana Fredes – LG Hausys Europe GmbH - Ph. +41 (0) 79 693 46 99 – mfredes@lghausys.com
High resolution images available: www.himacs.eu/newsroom