

## **Pan-gyo Residence, Korea**

### **Curved liked a flowing wave of HI-MACS®**



*With the construction of the **Pan-gyo Residence** by the Korean architecture firm, **Office 53427**, a **HI-MACS® façade** was used for the first time in Korea. The properties of the material masterfully underline the objectives of the firm, which has set itself the goal of using new materials and technologies to counteract the homogeneous Korean architectural landscape and its monolithic design.*

The Pan-gyo Residence was built on a luxury site of detached houses, following a tender for which illustrious architects were invited to bid, and it is now the most striking house in the district. It stands on a corner lot of around 300 m<sup>2</sup>; on the west and north sides it extends as far as the edge of the lot, while to the south and east its organic, asymmetrical shape flows around a green space and wooden terraces. Its snow-white walls emerge from a wooden base like a petrified sea wave, with the foam expressed by the perforation of the façade. This new way of shaping the façade and the cubature of a living space, breaks with the way in which residential buildings are traditionally built in Korea, and demonstrates a new and innovative kind of living space design.

**HI-MACS® Media contact for Europe:**

Mariana Fredes – LG Hausys Europe - +41 (0) 22 879 54 83 – [mfredes@himacs.eu](mailto:mfredes@himacs.eu)  
High resolution photos available at [www.himacs.eu/press](http://www.himacs.eu/press)

It is thanks to the open-mindedness of the client that this innovation was possible as, during the draft phase, the architect **Kiwoong Ko** presented three façade materials – wood, brick and the HI-MACS® acrylic stone. The client chose the Natural Acrylic Stone because he wanted a house that would be as different as possible from the others. Using HI-MACS® for the first time to build façades in Korea confirmed this desire for individuality. The architect was also delighted with the client's choice as *“HI-MACS® is one of the materials that has very much appealed to me for some years. My experience with this durable material and its excellent thermo-formability properties has been very satisfactory, so I was more than happy to recommend the use of this material for the façade of the Pan-gyo Residence.”*



It was only thanks to the extraordinary mouldability of HI-MACS® that Kiwoong Ko was able to produce his innovative design, with windows that protrude from the façade and square incisions. “I imagined a living space in which the room structure would satisfy the needs of the family, while providing a natural connection between the living area and the outdoors,” the architect says, describing his concept. It was therefore logical that, apart from encasing the brick façade in HI-MACS®, the acrylic stone was also used for the interior design of the house.



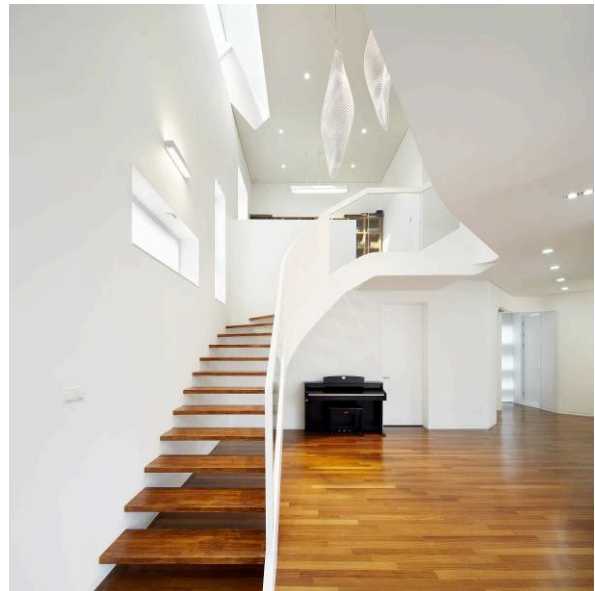
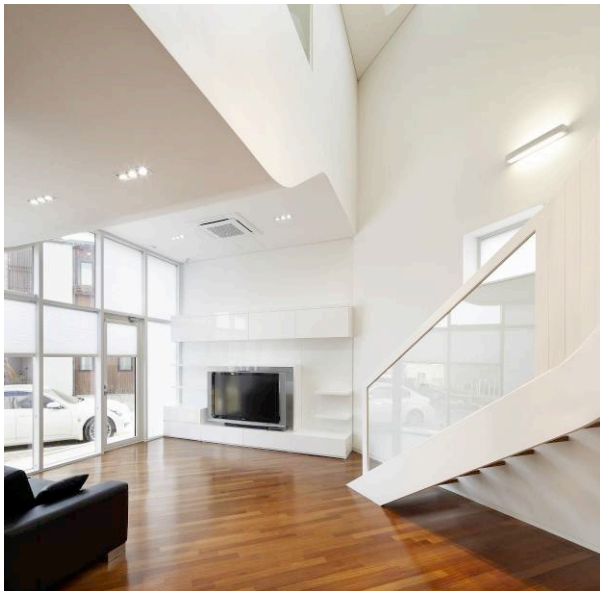
**HI-MACS® Media contact for Europe:**

Mariana Fredes – LG Hausys Europe - +41 (0) 22 879 54 83 – [mfredes@himacs.eu](mailto:mfredes@himacs.eu)  
High resolution photos available at [www.himacs.eu/press](http://www.himacs.eu/press)



The building is entered through a glass front on the south side of the ground floor, via a vestibule. Here the masterly design is already evident. With its rounded corners which resemble a piece of furniture, the vestibule divides an open space into a living area and a kitchen-dining area. The curving ceilings and walls are in **HI-MACS® Alpine White**, while the floors have the same wood finish as the base of the building and the terraces.

Kiwoong Ko continued his consistent use of the material into the furnishings. The built-in furniture in the living room, the open-plan kitchen with an island, and the banister of the sculptural staircase leading from the living area to the upper floor, are all made of HI-MACS® and, with their warm feel, lend the space both cosiness and elegance.



**HI-MACS® Media contact for Europe:**

Mariana Fredes – LG Hausys Europe - +41 (0) 22 879 54 83 – [mfredes@himacs.eu](mailto:mfredes@himacs.eu)

High resolution photos available at [www.himacs.eu/press](http://www.himacs.eu/press)

He has also remained true to his design in terms of spacing and the arrangement of the ground floor. The secondary rooms, a bedroom, a bathroom divided into three areas, and a utility room, are on the north side, facing away from the sun. Fine details such as installing two sinks in the kitchen, and a change of flooring between the kitchen island and the wall units – from wood to the water-resistant HI-MACS® – bear witness to just how exhaustively the architect bore the needs of a family in mind.

The curving staircase, the banister of which is made of HI-MACS® and glass, leads to the first floor which contains a suite comprising a dressing room, a spacious bedroom and two bathrooms. There is also a family den, which explains the organically curving ceiling in the living area, as it is made up of two levels connected by a staircase, with the upper level providing access to a roof terrace.

Not only does this house make elegant waves with its cubature and well-thought-out design; it also represents a thunderous wave of progress in terms of material and technology.

## PROJECT INFORMATION

---

**Location:** Pan-gyo, Korea

**Design:** Office 53427

**Manufacture:** Daemyung ATM

**Material:** HI-MACS® S28 Alpine White; [www.himacs.eu](http://www.himacs.eu)

**Photo credits:** Yongkwan Kim

## **HI-MACS® Natural Acrylic Stone**

**HI-MACS®** is the **New Generation** of solid surface. It is composed of 70% natural stone powder derived from bauxite, 25% high quality acrylic resin and 5% natural pigments. Designed and produced by **LG HAUSYS**, a world technology leader, it is distributed across Europe from **LG Hausys Europe** headquarters in Geneva.

It is a product of highest quality, and is inert and ecological. Its versatility allows users to mould and transform their ideas into reality with possibilities far beyond those offered by materials traditionally used in the world of architecture and design.

The most prestigious groups have adopted this product which adapts to the most demanding needs with its extraordinary characteristics; it is completely non-porous, has the highest level of durability and thus does not lose its colouring. It also has uniform thickness, allowing for perfectly imperceptible joints! Easy to fabricate, **HI-MACS®**, with its excellent thermoformability properties, lets you adapt the material to the desired shapes and to create a range of designs that is nearly infinite.

**HI-MACS®** is used by the most prestigious companies, and many well-known architects and designers such as **Zaha Hadid, Jean Nouvel, David Chipperfield, Ron Arad, Marc Newson, Elke Delugan Meissl** and **Joaquín Torres**. Some of the most notable projects made out of **HI-MACS®** include the **Prado Museum** and the **Hotel Puerta América** in Spain, **Leonardo Glass Cube** and the **Porsche Museum** in Germany and the **Zara** flagship store in the Westfield Shopping Complex in London, UK.

**HI-MACS®** is available in more than 100 colours, comprised of the following ranges: **Solids, Granite, Sand, Pearl & Quartz, Volcanics, Lucent, Galaxy, Marmo**, and the new recycled range of colours **HI-MACS® Eden**. Eden is **GREENGUARD** Certified for indoor air quality as a “**Low Emitting Product**” which can help your projects achieve **LEED® credits** in sustainable design, under the Green Building Rating System managed by the **U.S. Green Building Council (USGBC)** – A clear benefit for constructing sustainable buildings.

**HI-MACS®** is manufactured in 3, 6, 9 and 12 mm thicknesses. Furthermore a wide range of sinks and bowls is available.

**HI-MACS®** is synonymous with the very best quality thanks to a production process that it is one of the world's most innovative, sourcing the finest materials that result in a harder, flatter more resistant product. Many international certifications backup the outstanding quality of **HI-MACS®** concerning environment, hygiene, fire resistance and processes as ISO 9001 and 14001, Greenguard, NSF, LGA and IMO MED (Module B and D), among others.

**HI-MACS®** is in a league of its own with its quality assistance, guaranteed by **Quality Club**, a network of expert and approved fabricators. Thanks to the quality of the material, we can offer the longest warranty package currently on the market: 15 years.

## **HI-MACS® The New Generation**

### **Inspired by Architecture**

[www.himacs.eu](http://www.himacs.eu)

**HI-MACS® Media contact for Europe:**

Mariana Fredes – LG Hausys Europe - +41 (0) 22 879 54 83 – [mfredes@himacs.eu](mailto:mfredes@himacs.eu)  
High resolution photos available at [www.himacs.eu/press](http://www.himacs.eu/press)