

## HI-MACS® lends timeless elegance to LG Science Park in Seoul



*The **LG Science Park**, a research centre built by the LG Corporation in Seoul, is a project of extraordinary scale. Over an area of 111 hectares, LG combines the research power of all of the corporation's subsidiaries in 26 buildings, some of which are up to nine storeys tall. The American **architectural firm HOK** was responsible for executing the major project, alongside the Seoul-based firm **Gansam Architects**, which took care of planning and design as well as the landscape architecture. And for the design of the headquarters for the **LG Hausys** division, both outdoor and indoor, there was of course only one material for the job: the company's own solid surface material, **HI-MACS®**.*

The LG Science Park in Seoul's Magok District aims to inspire the 24,000 engineers and scientists working for the corporation on product innovations. HOK's design captures LG's vision of creating synergies between people and places through countless interactive possibilities. For example, employees can meet and interact with each other within individual labs, in lab neighbourhoods or – thanks to transparent atria – between and across lab units. Moreover, all buildings are connected to each other through parking facilities that are designed in a targeted way to encourage interaction among employees.

**HI-MACS® press contact for Germany:**

Ruess International GmbH – Daniela Tscherbakova – Tel. +49 (0) 711 16 44 6-63 – [daniela.tscherbakova@ruess-group.com](mailto:daniela.tscherbakova@ruess-group.com)  
High-resolution images available at [www.himacs.eu](http://www.himacs.eu)

This mix of rooms for exchange and teamwork on the one hand and concentrated, individual work on the other supports the company's efforts to create forward-looking technology with timelessly beautiful design. The individual rooms and buildings exhibit the same elegance of form as LG's consumer products, which feature elegant exteriors wrapped around cutting-edge technology. Nevertheless, each building still has its own identity.



For example, the flagship product of LG Hausys – its solid surface material, HI-MACS® – makes an appearance even at the entrance to the building complex, pointing to the resistant, weatherproof nature of the high-tech material. Visitors are shown the way on building signs in the immaculate Alpine White colour.





In the LG Hausys lobby, the visitor's eye is immediately drawn to the impressive wavy information counter and the artfully wound seating. Here, too, HI-MACS® in Alpine White lends a discreet elegance to the space while also revealing another highly developed property of the solid surface material: thanks to its composition of minerals, natural pigments and acrylic, it can not only be processed seamlessly but also thermoformed into almost any shape.



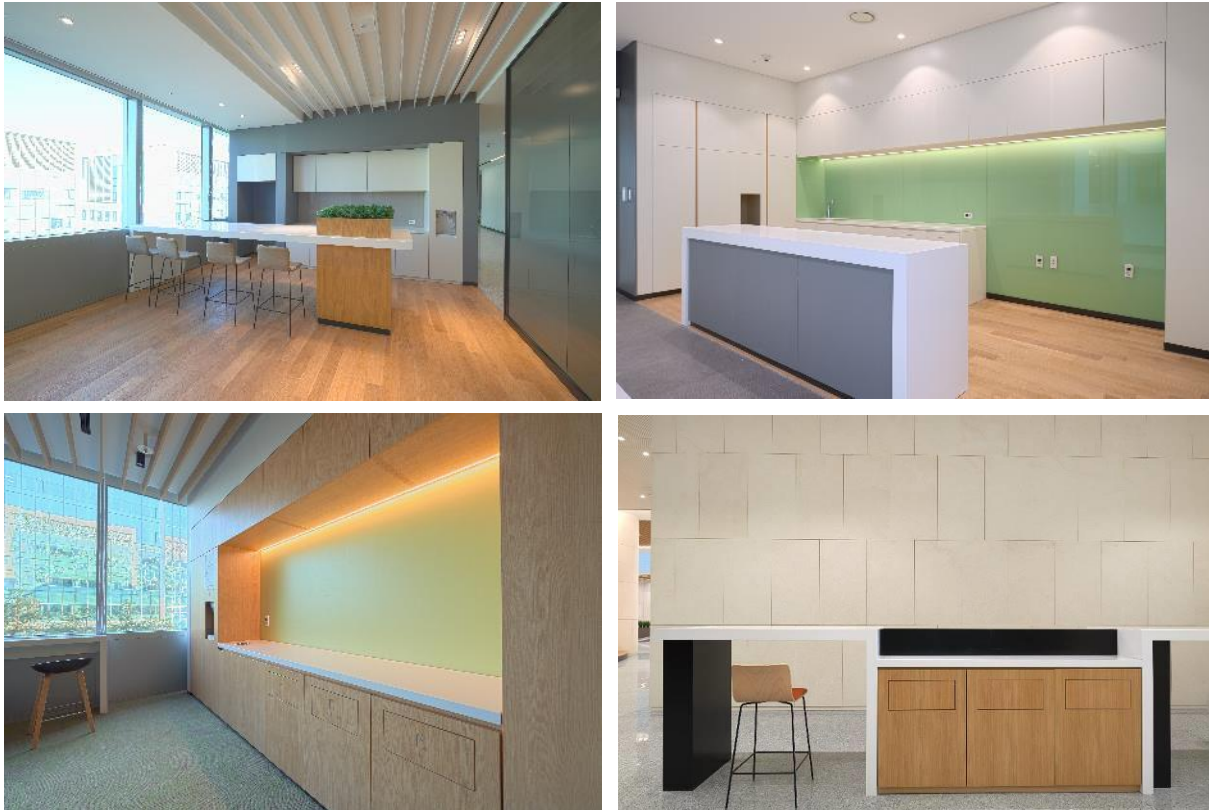
Further use in the building reveals the full extent of the versatility of the solid surface material. The glossy HI-MACS® interior cladding demonstrates how the material is also able to handle heavy-duty use in high-traffic areas such as entrance halls and waiting areas – even in the classical Alpine White colour that was chosen in this case.



**HI-MACS® press contact for Germany:**

Ruess International GmbH – Daniela Tscherbakova – Tel. +49 (0) 711 16 44 6-63 – [daniela.tscherbakova@ruess-group.com](mailto:daniela.tscherbakova@ruess-group.com)  
High-resolution images available at [www.himacs.eu](http://www.himacs.eu)

The choice of this elegant shade continues seamlessly in its use on other surfaces. The radiant white can be found on the work surfaces in the many kitchen areas, on the bistro tables and on open work surfaces. It creates a relaxed, bright and friendly atmosphere and also provides a pleasant, tactile experience. In this way, HI-MACS® underscores the architects' efforts to create zones where employees and visitors can enjoy meeting and spending time interacting.



Thanks to its non-porous surface, HI-MACS® is the ideal material for use in areas where there is especially heavy traffic, such as offices. The solid surface material does not allow bacteria, mould or dirt to grow, thus complying with the strictest hygiene standards. Its durability and excellent care and cleaning properties make it an easy choice for sanitary facilities as well. A number of WC wash basins at LG Hausys were therefore designed in the colour Crystal Beige. The clear design of the solid surface material – sometimes bright, sometimes dark or with a discreet sprinkling of colour – once again emphasises the minimalist approach of LG's overall concept to create a feeling of timeless elegance. The solid surface material HI-MACS® is definitely a high-tech material that meets the highest standards in terms of quality, aesthetics, functionality and hygiene, which makes it the ideal choice for translating LG's concept of cutting-edge technology into an elegant, stylish look.

**HI-MACS® press contact for Germany:**



## **PROJECT INFORMATION**

**Project name:**

LG Science Park

**Location:**

Seoul, South Korea

**Architecture & interior design:**

HOK (US)

Gansam Architects, Seoul

**Material:**

HI-MACS® Alpine White S028, HI-MACS® Crystal Beige G101, [www.himacs.eu](http://www.himacs.eu)

**HI-MACS® elements:**

Building signs, information counter in the lobby, thermoformed seating in the lobby, interior wall cladding, wash basins, tables, shelves, kitchen work surfaces

**Photo credit:**

© LG / © HOK

## HI-MACS® by LG Hausys

[www.himacs.eu](http://www.himacs.eu)

HI-MACS® is a solid surface material that can be moulded into any shape. It is widely used for architectural and interior applications, such as sculptural and high performance wall-cladding or kitchen, bathroom and furniture surfaces, in commercial, residential and public space projects. It is composed of minerals, acrylic and natural pigments that come together to provide a smooth, non-porous and visually seamless surface which meets the highest standards for quality, aesthetics, fabrication, functionality and hygiene – offering manifold advantages over conventional materials.

HI-MACS® provides limitless possibilities for surfacing solutions and inspires creative minds from all over the world. **Zaha Hadid, Jean Nouvel, Rafael Moneo, Karim Rashid, Marcel Wanders** and **David Chipperfield**, among others, have completed fabulous projects using HI-MACS®.

At the forefront of innovation as always, LG Hausys recently introduced two new products. First **HI-MACS® Ultra-Thermoforming**, an innovative formula that pushes the boundaries of solid surface shaping to a whole new level, with 30% more thermoplastic capabilities - the biggest innovation for the Solid Surface history since its inception in 1967. Now, **HI-MACS® Intense Ultra**, combining the characteristics from two disparate worlds: **Intense Colour Technology** and **Ultra-Thermoforming**.

LG Hausys' HI-MACS® uses a simple heating process to give three-dimensional thermoplastic forming capabilities, allows visually seamless designs, offers a virtually limitless range of colours and – for some shades - exhibits a special translucency when exposed to light. Although HI-MACS® is almost as robust as stone, it can be worked in a similar way as wood: it can be sawn, routed, drilled or sanded.

HI-MACS® is manufactured using a new generation technology, the **thermal cure**. The temperature reached during the manufacturing process sets HI-MACS® apart from other solid surfaces and creates a denser, even more homogeneous, sturdy, durable surface – with a better resistance and superior thermoforming performance.

HI-MACS® does not absorb humidity, is highly resistant to stains, and is easy to clean, maintain and repair.

Countless internationally recognized certificates attest to the quality of HI-MACS® in terms of ecological commitment, hygiene and fire resistance – being the first Solid Surface in the market to receive the official **European Technical Approval (ETA) for façades** – for Alpine White S728 colour. Furthermore, HI-MACS® has obtained the French **QB certification** and **CSTB ATec “Avis Technique”** for facade applications.

HI-MACS® offers a 15-year warranty for products fabricated by a Quality Club Member.



### HI-MACS®. Because Quality Wins.

For more information and to stay connected, visit our [website](#) and our [newsroom](#).

*Let's connect!*



\* **HI-MACS®** is designed and produced by **LG HAUSYS**, a world leader in the technology sector belonging to LG Group, and distributed by **LG HAUSYS EUROPE** based in Frankfurt (Germany).

**HI-MACS® press contact for Germany:**

Ruess International GmbH – Daniela Tscherbakova – Tel. +49 (0) 711 16 44 6-63 – [daniela.tscherbakova@ruess-group.com](mailto:daniela.tscherbakova@ruess-group.com)  
High-resolution images available at [www.himacs.eu](http://www.himacs.eu)